



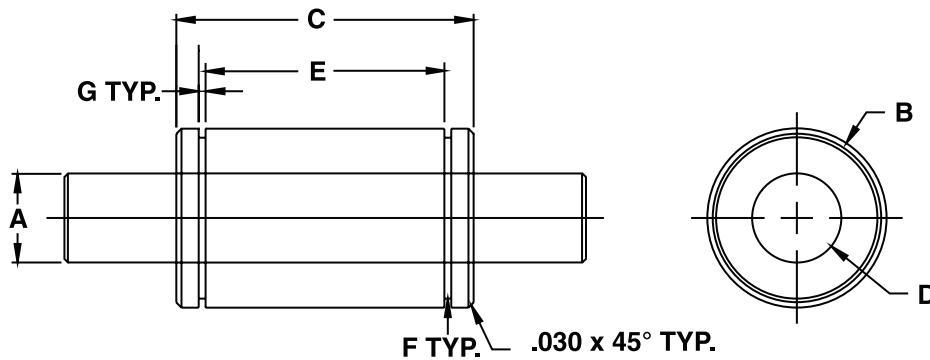
Kerk® GR Series Linear Rails and Bushings

The GR Series linear rail system has been designed for light load applications where low cost, minimum frictional drag and long wear life are primary design considerations.

The assembly consists of a centerless ground and burnished stainless steel shaft mated with a Kerkite® composite polymer bushing. The material combinations have been selected so that thermal fluctuations have minimal effect on system performance. Additional lubricity and extended life can be obtained by using a low friction Kerkote® TFE coating on support shafts available in both stainless and alloy steel.

Standard shaft straightness is .002-in (0.05mm) per foot and typical radial clearance between shaft and bushing is .0005-in (.013mm) on non-coated assemblies and .001-in (.025mm) on Kerkote TFE coated assemblies.

Bushings are manufactured with standard retaining ring grooves.



Rail Diameter Code	Standard Part Lengths	Rail Diameter	Rail Diameter w/TFE	Bushing Outside Diam.	Bushing Length	Bushing Inside Diam.	Snap Ring Groove Location E	Snap Ring Groove Diam. F	Snap Ring Groove Width G	Rail Chamfer H	Radial Load	
		A	A	B	C	D	E	F	G	H	lbs (Kg)	
	in ±.010 (mm ±0.25)	in ±.0006 (mm ±0.015)	in ±.0006 (mm ±0.015)	in ±.0006 (mm ±0.015)	in ±.010 (mm ±0.25)	in ±.0005 (mm ±0.013)	in ^{+0.010} _{-.000} (mm ^{+0.25} _{-0.00})	in ±.004 (mm ±0.100)	in ±.0003 (mm ±0.008)	in (mm)	lbs (Kg)	
GR	04	6/8 10/12	.2475 (6.287)	.2472 (6.279)	.5000 (12.700)	.765 (19.43)	.2485 (6.311)	.535 (13.59)	.450 (11.43)	.040 (1.02)	.020 (.51)	5 (2.3)
	06	6/12 15/18	.3715 (9.436)	.3712 (9.428)	.7500 (19.050)	1.275 (32.39)	.3725 (9.462)	.995 (25.27)	.676 (17.17)	.046 (1.17)	.020 (.51)	10 (4.5)
	08	12/15 18/24	.4965 (12.611)	.4962 (12.603)	1.0000 (25.400)	1.660 (42.16)	.4975 (12.637)	1.330 (33.78)	.900 (22.86)	.046 (1.17)	.020 (.51)	15 (6.8)
	12	18/24 36	.7415 (18.834)	.7412 (18.826)	1.2500 (31.750)	2.036 (51.72)	.7425 (18.860)	1.620 (41.15)	1.125 (28.60)	.058 (1.47)	.030 (.76)	25 (11.4)